

Place and Resources Scrutiny Committee

10 November

Climate & Ecological Emergency Strategy
Progress Update Autumn 2022



Antony Littlechild | Sustainability Team Manager

Progress - highlights

Dorset Council
(operational)

Carbon Neutral
by 2040

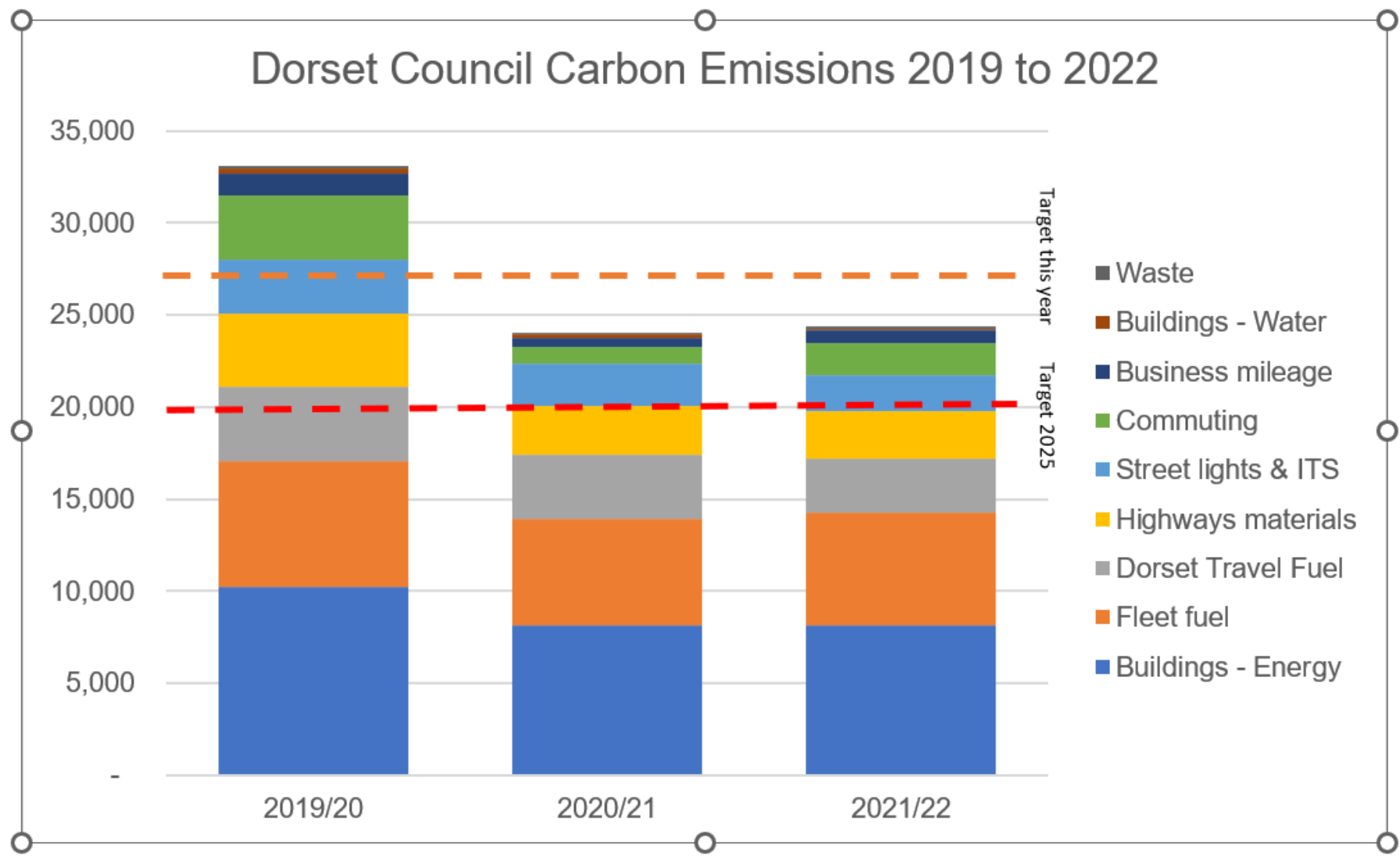
Our footprint **reduced**
approximately **26%** to
24,325 tonnes

County-wide
(facilitation)

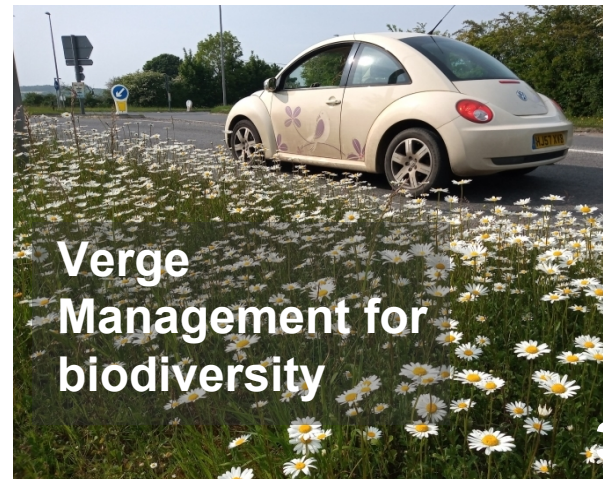
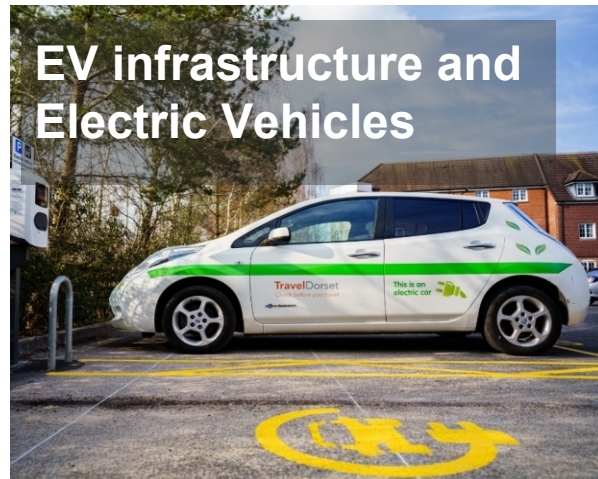
Carbon Neutral
by 2050

County footprint **reduced**
by **18%** to 1,4 million
tonnes between 2017 & 2020

Dorset Council Carbon Emissions 2019 to 2022

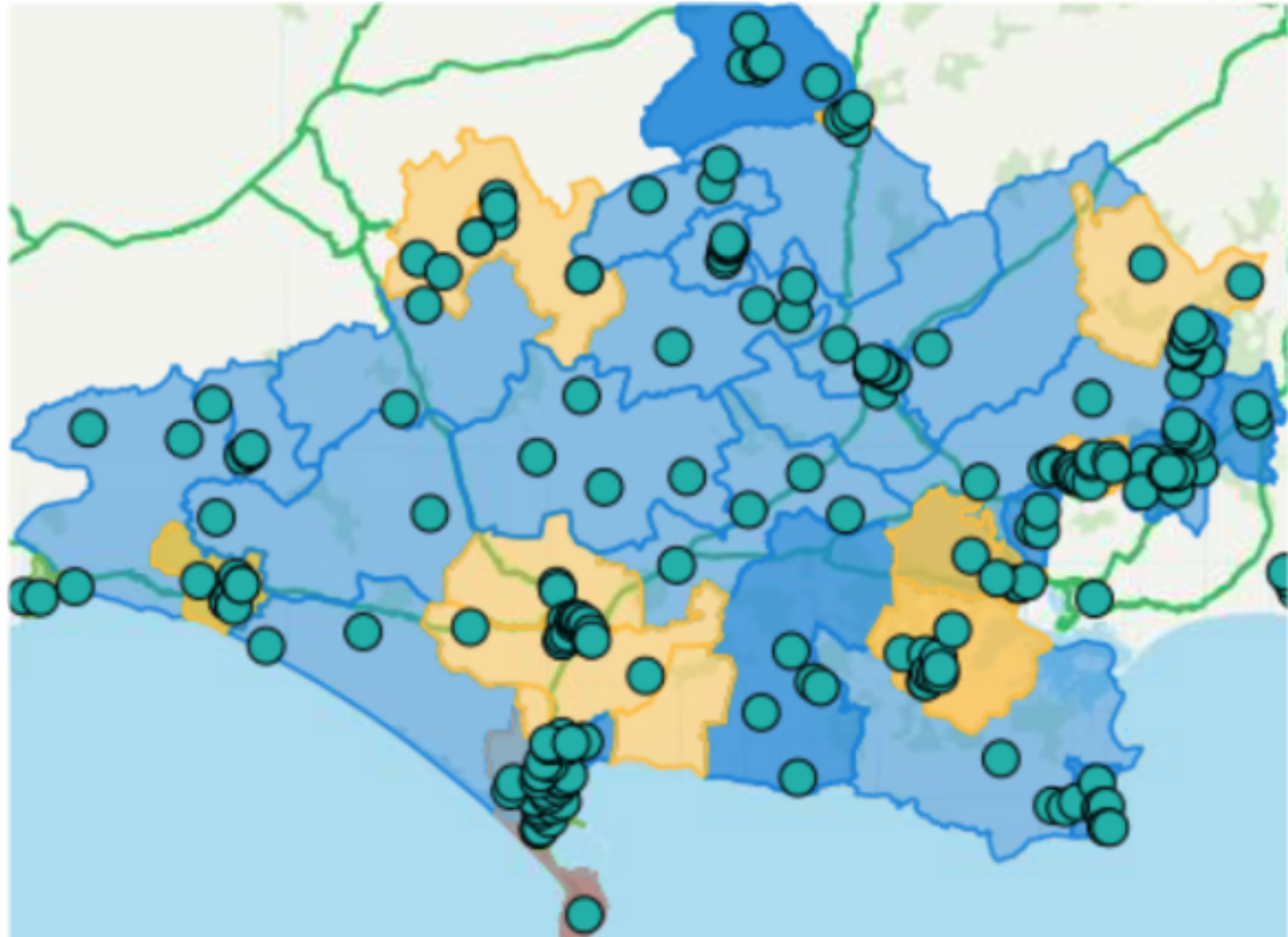


Some key areas of progress







Dorset Public Sector Decarbonisation Scheme

- Over £18million PSDS Grant Spent
- Focus on Decarbonising Heating
- Over 350 Decarbonisation Projects Delivered
- Over 200 different properties benefitting
- Over 1500 tonnes CO2 savings per annum



Roadmap for delivery – climate operational

Operational Work Streams	Programmes	Reduction against Baseline	2025 target	Progress in last period	Workstream Challenges	Summary of carbon savings and other benefits
 8% CO2e, 2281 tCo2	Street Lighting Energy Efficiency Programme	33%	40%	Capital allocated from the £10m climate change capital programme to replace further 9000 lights with LED over 5 years. Continued work around using the £250K funding replacing the most inefficient lanterns with LED	Requirement of £15m to reduce carbon to its minimum.	Investment programme estimated to reduce emissions by 368 tCO2e Reduction in nation carbon intensity of electricity, helping reduce emissions.
 14%	Business Travel & Commuting Travel Plan	40%/50%	40%/40%	Significant reduction in business travel through home working and hybrid working arrangements, facilitated by ICT system Risk travel may increase as more staff return to work, but not anticipated to reach previous levels.	<ul style="list-style-type: none"> Enforcing & resourcing the Travel Plan Continued avoidance of business and commuting through active encouragement of home/hybrid working Need to build travel behaviours into staff terms and conditions and HR processes 	Continued work on the sustainable transport plan and promoting biodiversity as part of the construction and development
 29%	Estates Transformation & Decarbonisation	Energy 21%	40%	Charging point feasibility study completed, with funding allocated from the £10m climate change capital programme to install additional EV charging points across DC estate. Procurement to obtain a provider for charge point infrastructure has started. Work under the Salix decarbonisation funding of nearly £19m as part of the grant provided to Dorset Council	Lack of resource for EPC work on LET properties Lack of Capital funding restricting options to reduce carbon Generating commercial revenue from charging EV at car parks	Reduction in national carbon intensity of electricity aids reducing emissions. Carbon emission reductions being calculated.
 22%	Dorset Travel	28% (estimated)	40%	Limited current scope to address emissions reduction – unlikely to reach 2025 target. Study commissioned to explore options to maximise use of DC fleet to deliver service, and discussions ongoing regarding possible decarbonisation of elements of fleet.	Lack of investment into public transport as part of the bus service improvement plan Dorset Travel reliant on other service decisions	* Indicative only. Data based on estimated mileages from range of contracts. Possible carbon savings being calculated.

Current Progress estimated at 26%

Programme management approach

Ideas	Bids	Trials	Funding/Resources Required	New Projects	Current Projects	Completed Projects
<p>Business Travel & C. Fleet Transformation</p> <p><input type="radio"/> Driver Behaviour Using technology in vehicles to improve driver behaviour, reduce costs and lower emissions. This can be done using telematics technology which is installed in vehicles.</p> <p>31/03/2023</p> <p>Estate Transformat.</p> <p><input type="radio"/> County Farms Opportunities through County Farms - need to identify what these are.</p> <p>Fleet Transformation</p> <p><input type="radio"/> Electric Street Sweepers</p> <p>Greenpace</p> <p><input type="radio"/> Tourist Attraction Improving Dorset as a tourist attraction - Coast Paths, Country Parks - reducing the amount of travel abroad. Increasing signposting on ROW to improve walk experience.</p> <p>Greenpace Estate Transformat.</p> <p><input type="radio"/> Self Providing Electricity for Sites Reducing energy use at County Parks using more solar energy - Vehicles/cafes/etc.</p> <p>Estate Transformat.</p> <p><input type="radio"/> Generating Charging Revenue Generating commercial revenue from charging EV's at Dorset Council car parks.</p>	<p>Estate Transformat.</p> <p><input type="radio"/> Public Sector Decarbonisation Scheme -Phase 3 Focus is around heating systems in public buildings.</p> <p>31/03/2023</p> <p>Dorset Travel</p> <p><input type="radio"/> Bus Service Improvement Plan Funding request to incentivise companies to change vehicle types.</p>	<p>Highways Materials</p> <p><input type="radio"/> High Speed Route Grass Collection Trials to collect cuttings and litter from verges of high speed roads - higher cost to dispose of waste.</p> <p>31/03/2023</p> <p>Highways Materials</p> <p><input type="radio"/> Cold Mix Recycling Working with contractor to undertake trial - this is based on the supplier taking delivery of new device to provide this option.</p> <p>30/04/2023</p> <p>Fleet Transformation</p> <p><input type="radio"/> Parking Service Fleet Need to confirm date of trial finishing Milestone for work.</p> <p>31/03/2023</p> <p>Business Travel & C. Fleet Transformation</p> <p><input type="radio"/> Driver Behaviour Maximising the fuel that we use by driving more efficiently.</p> <p>Fleet Transformation Future</p> <p><input type="radio"/> Hydrogen Fuelled Vehicles New hydrogen plant being setup in Ferndown - awareness of when this be complete.</p> <p>Fleet Transformation</p> <p><input type="radio"/> Electric Vehicles Trials Trials of different vehicles to identify which classifications can be electrified.</p> <p>Fleet Transformation</p>	<p>Estate Transformat.</p> <p><input type="radio"/> EPC for LET properties Requirement for Energy Performance Certificates for Dorset Council LET properties.</p> <p>31/03/2023</p> <p>Estate Transformat.</p> <p><input type="radio"/> Battery Storage Modelling Skilled business resource required to model the possible requirements to battery storage generated from the PV panels across the estate.</p> <p>Estate Transformat. Highways Materials</p> <p><input type="radio"/> Hotbox - Battery Storage Funding required to provide battery storage for the Asphalt Hot Box.</p> <p>Estate Transformat.</p> <p><input type="radio"/> EV Charge Points Possible requirement for a PM to help with this work.</p> <p>Highways Materials Future</p> <p><input type="radio"/> Electric charging for Highways tools/plant Changing current tools/plant and moving to electric options. Discussions are ongoing with suppliers as the tools provided have very poor battery life.</p> <p>Greenpace Fleet Transformation</p> <p><input type="radio"/> Expanding EV mowing fleet Increase the amount of electric mowers used across the estate - Ride on mowers the technology is not good enough at present.</p> <p>Street Lighting</p>	<p>Estate Transformat.</p> <p><input type="radio"/> County Farms Plan Rewriting of the plan on how County farms can be used, this could need to go to public consultation.</p> <p>31/12</p> <p>Business Travel & C.</p> <p><input type="radio"/> Dorset Travel Plan Creation and publication of the Dorset Travel Plan.</p> <p>31/12</p> <p>Business Travel & C. Estate Transformat. Fleet Transformation</p> <p><input type="radio"/> Charging Infrastructure £3.7 million of funding provided for charging infrastructure. 175 fast/10 rapid charge points have been identified.</p> <p>31/12</p> <p>Greenpace Future</p> <p><input type="radio"/> Power Tool Conversion - Phase 2 Determine what is included in phase 2 of this work. Currently technology limitations with remaining tools.</p> <p>Business Travel & C. Fleet Transformation</p> <p><input type="radio"/> Pool Vehicle Booking System Requirement for a system to book/handover pool cars.</p> <p>Renewable Energy</p> <p><input type="radio"/> DC site - Renewable Energy Investment opportunities being explored for larger scale energy generation sites.</p>	<p>Street Lighting</p> <p><input type="radio"/> Street Light Replacement Current project to replace 9000 lanterns over 2 years.</p> <p>31/12</p> <p>Greenpace</p> <p><input type="radio"/> Replacing trees Current ongoing projects that will replace every 1 tree removed with 2.</p> <p>Estate Transformat. Fleet Transformation</p> <p><input type="radio"/> EV Charging Sites - Phase 1 Installing charging points into site - phase 1 has been agreed and orders going in for County Hall, Westport House and Charminster Depot.</p> <p>31/12</p> <p>Estate Transformat. Fleet Transformation</p> <p><input type="radio"/> EV Charging Sites - Phase 2 and 3 Sites have been identified for charging infrastructure - Programme board need to agree phase 2/3 procurement.</p> <p>Greenpace</p> <p><input type="radio"/> ROW Improvement Plan</p> <p>Fleet Transformation</p> <p><input type="radio"/> EV Vehicles purchase Capital funding allocated to first round of pool car and small fleet vehicles replacement. 4/10 vehicles have now arrived and are awaiting branding.</p> <p>31/12</p> <p>Estate Transformat.</p> <p><input type="radio"/> Self Decarbonisation Work</p>	<p>Highways Materials</p> <p><input type="radio"/> Hotbox Using solar power to heat the asphalt.</p> <p>Estate Transformat.</p> <p><input type="radio"/> County Hall - Heatpumps Installation of heat pumps at County Hall - does this mean for energy saving?</p> <p>Greenpace</p> <p><input type="radio"/> Electric ATV Electric ATVs used across Dorset - Charged by solar panels across the county.</p> <p>Highways Materials</p> <p><input type="radio"/> Live Labs bid Working with Shell to complete bid (E3M) - Expected decision time.</p> <p>31/12</p> <p>Greenpace</p> <p><input type="radio"/> Railway Upgrade Completion of improvements - £180 DOT.</p> <p>Greenpace Nature Based Solutions</p> <p><input type="radio"/> Verge Cutting Reduction in verge cutting from year improving bio-diversity.</p> <p>Renewable Energy</p> <p><input type="radio"/> Converting Power Tools Changing current power tools to electric which is powered by energy generated on site.</p>

Comms support

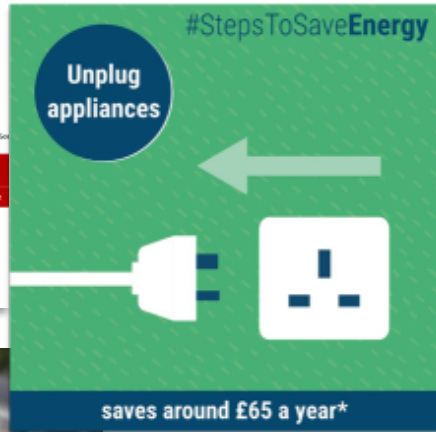
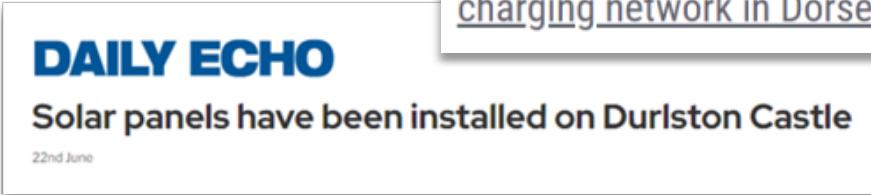
- Media coverage (local and national)
- Development of climate & ecology sub branding
- Behavioural change & awareness campaigns
- Resident updates
- Engaging social media content
- Collaborative campaigns inc. energy

Up next...

- Further development & embedding of sub-branding
- Update to council's climate web pages
- Spotlight on PSDS programme achievements
- People Stories
- And lots more...



Dorset Council starts work to expand electric vehicle charging network in Dorset



New web pages

- Engaging content
- Progress updates
- Advice & signposting
- Shared resources
- Resident stories
- Partnership programmes



Partner engagement

- Joint sessions with the Dorset Chamber of Commerce
- Town and parish council webinars & outreach (circa 25% have declared climate emergencies)
- Public-sector decarbonisation group set up
- Regular meetings with community groups
- Work with other strategic partners such as SGN and SSEN
- Close working with BCP and other regional local authorities



We can all make a difference

What's next

- Refresh of strategy and action plan
- Accelerate operational delivery in key areas such as fleet, EV infrastructure, street lighting and estates transformation.
- Policy focus
- Decision-making
- Widen engagement
- Deepen focus on ecological and adaptation – update at next meeting



Dorset
Council

